



Student Social Welfare Policy

At ICOT College, your well-being is our priority!

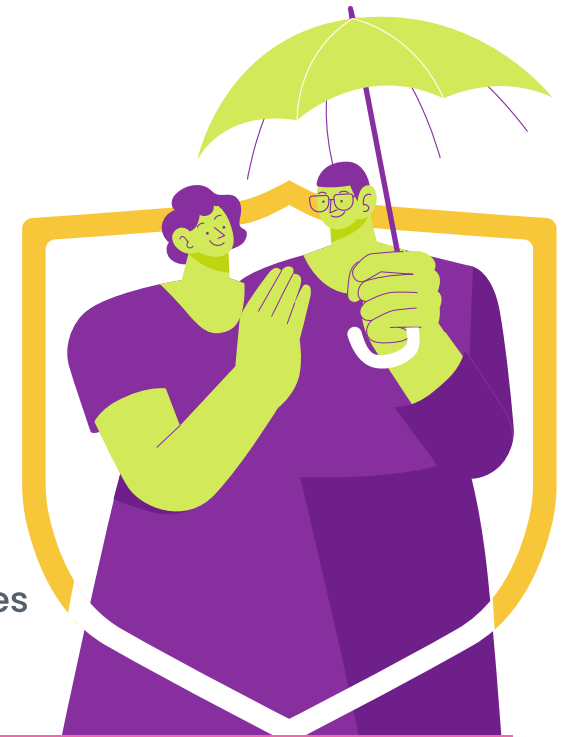
Student Social Welfare Policy

At ICOT College, we are dedicated to fostering a supportive, inclusive, and respectful learning environment for all our students. This Social Welfare Policy reflects our commitment to ensuring that every student has the resources they need to succeed both academically and personally.

Safe work practices and maintaining a secure environment are important to everyone. At **ICOT College**, we are dedicated to ensuring a healthy and

safe atmosphere for both students and staff.

As a student, you play a crucial role in fostering this environment, and **ICOT College** encourages all students to:



Take reasonable care of your own safety, health, and well-being, as well as that of others who may be affected by your actions or lack thereof while at **ICOT College**.

Work together with **ICOT College**, your fellow students, and others to comply with any relevant safety regulations and standards.

Report any defects or issues with equipment, facilities, or systems that could impact safety, health, or welfare to you and others.

Do not tamper with **ICOT College** equipment or intentionally undermine our safety standards.

Immediately report any accidents or injuries to your student advisor.

By sticking to these guidelines, we can all contribute to a safer and healthier learning environment.

Key Areas of Support

1. Health and Safety

Health Insurance Guidance: We assist international students in understanding and applying for health insurance coverage.

Academy+ Insurance: ICOT College provides Academy+ insurance to meet the needs of non-EEA students. This coverage ensures:

- Protection in the event of an accident or illness while in Ireland.
- Financial support in cases where the institution closes due to financial difficulties or accreditation withdrawal, preventing you from completing your course.

2. Financial Assistance

Flexible Payment Plans: To support students facing financial hardship, we offer tailored payment options to ease the burden of tuition fees.

Students can split their tuition fee in 6 times, but ensure that you pay the whole amount by the end of the year.

3. Housing Support

Accommodation Guidance: Our advisors help students find suitable housing, whether temporary or long-term.

Emergency Housing Assistance: We provide immediate support to students experiencing sudden housing challenges.

Partnership with Best Living Limited:

- Students arriving in Ireland can stay in temporary student accommodations through our partnership with Best Living Limited.
- Students may opt to extend their stay through a direct agreement with Best Living Limited.
- For those seeking permanent housing, our student advisors provide guidance on trusted platforms and resources to find accommodations independently.



Key Areas of Support

4. Social Inclusion and Community Engagement

- **Cultural Integration Events:** ICOT College organizes regular social gatherings, cultural exchanges, and trips to help students build connections and experience Irish culture.
- **Exploring Irish Culture and History:** Our academics lead students on excursions to introduce them to Ireland's rich heritage.
- **City Walking Tours:** Upon arrival, new students are invited to a walking tour of their city to help them familiarize themselves with their surroundings during their first days in Ireland.

We're Here to Help

For any welfare-related questions or concerns, please contact your student advisor or our student welfare officers:

Student Welfare Officer (Dublin): Laura Reis
laura@icot.ie - 015483130

Student Welfare Officer (Cork): Fagner Christo
fagnercork@icot.ie - 212418771

5. Support in Your Own Language

ICOT College understands that language barriers can pose unique challenges. Our student advisors are here to support you in your preferred language, offering help with:

- Visa applications and renewals.
- Necessary documentation for your arrival in Ireland.
- General advice and guidance throughout your stay.

At ICOT College, your well-being is our priority.

We're here to support you every step of the way.

Together, we make it happen!





Student Social Welfare Policy

At ICOT College, your well-being is our priority!